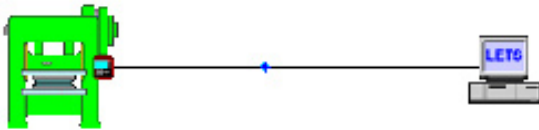


New Webinar Available—Learn About Wintriss LETS Factory Reporting Software

**Call your PRI Application Engineer To Schedule A One Hour
Webinar For Your Staff**

Honeywell LETS factory reporting software uses the latest technology to collect production data, including Overall Equipment Effectiveness (OEE), from presses equipped with Wintriss SmartPAC press automation controls as well as virtually every other machine in your factory.

LETS features:



- Allows you to easily view and monitor your machines status.
- Identifies downtime causes.
- Provides a variety of efficiency and other customizable reports.
- Can talk to all machines; not just presses.
- Uses your existing Ethernet (including wireless).
- **Powerful new scheduling tool available.**
- Automatic report distribution.
- Tracks total hits on every die.

Tight Capital Budgets Have Your Production Efficiency Handcuffed?

PRI And Coe Press Equipment can help you discover productivity upgrades for your coil handling and feeding equipment for your pressroom!

Update to Servo Feed Controls

Many servo feeds in operation today were purchased in the late 80's and early 90's as servo technology was developing in the metal stamping industry.

While these early generation machines offered great advantages over the air and mechanical feeds



they replaced, most are built on "unsupported" hardware and software platforms.

You can face extended downtime in the event of the failure of a critical drive, motor, or motion controller.

Coe Press Equipment (continued)

Install Variable Speed Controls on Straighteners and/or Coil Reels

Many original straighteners and reels in coil feeding systems were designed with simple drive mechanisms. These consisted of basic ON/OFF controls, clutch mechanisms, eddy current drives, and DC drives. Today's AC variable speed drives and motors provide the necessary torque for the uncoiling and straightening functions. Modern variable speed controls are programmable to allow custom parameters to be developed to optimize machine performance.

Increase Overall Linespeeds With New Variable Speed Controls

As stampers push for higher productivity and output rates, they're often limited by the linespeed



capability of their straightener or reel. Many prog press lines were originally specified to run at maximum linespeeds of 40-60 FPM.

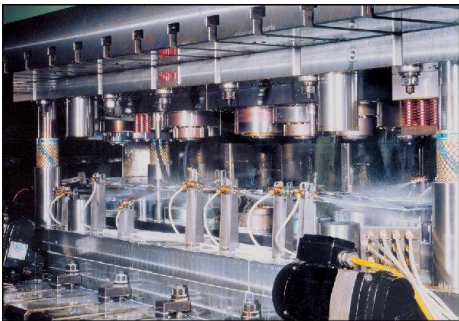
With upgrades to the machine drive and reducer package, many straighteners and reels can be made capable of supplying coil at rates of

(Continued on Page 3)

In-Die Lubrication Systems Leadership

PAX is the pioneer of in-die lubrication systems.

Our goal is to help you to increase press speeds, increase die life, improve part quality and reduce lube consumption--all through our “pressurized” technology that supplies a consistent and constant lubricant supply, eliminating priming issues.



We offer numerous styles and sizes and an unmatched amount of application-specific system designs (including spray cabinets for stock lubrication) and optional equipment / parts. Let’s talk lube systems for your application today!



Did you know?

SmartPAC2 users can put their units on the network and back up their tool memory!

There are many FREE benefits to networking your SmartPAC2:

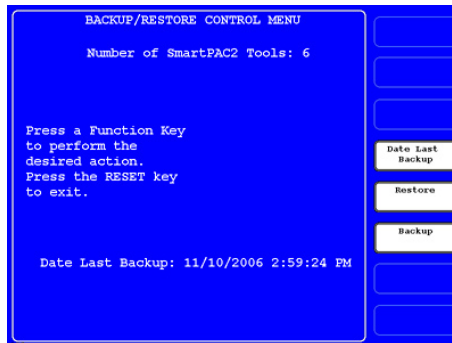
- Easier firmware upgrades.
- Receive text messages via email, pagers, and cell phones.
- SmartView (View Press status from anywhere).
- The new SmartView backup/restore (see below).

There are OTHER optional benefits to networking your SmartPAC2.

(Continued in next column)

Did You Know (continued)

- Info Center allows users to display setup sheets, photos or part prints right at the SmartPAC2!
- Once your SmartPACs are on the network, you can easily upgrade to LETS efficiency tracking, reporting and scheduling software.



There are various ways to backup / restore a SmartPAC

OPTION 1: Any SmartPAC2 can be backed up and restored via SmartView for free! SP2 firmware must be V4.59 or higher. Any SP2 on a network can be updated on line for free also. You can find the user instructions on-line at <http://www.smartpac2.com>.

This backup/restore feature is included in new SmartPA2s. In this scenario, the SmartPAC2 is placed on the network, and backup/restore is done over the customer’s network.

Existing SmartPAC2s may require a firmware upgrade. This is free if the systems are on the network. Consult your application engineer to obtain firmware upgrades ex-network.

OPTION 2: Any SmartPAC2 can be configured with the new USB Disk Backup Installed option firmware for \$300. Then SP2 can be backed up and restored simply by plugging in a USB disk! One USB disk can back up as many SP2s that will fit on it. Each SP2 backup takes 600Kb. Each SP2 file

(Continued in next column)

Did You Know (continued)

is identified by its serial #-- so user doesn’t have to do anything. During restore, if it is ever needed, an SP2 will only accept its own file!

OPTION 3: RSR software is replaced with new software called SBR (SmartPAC Backup and Restore) for a laptop. SBR uses the same serial cable to connect to either SmartPAC1 or 2.

This is a laptop backup/restore solution. This solution is the same as the old stand-alone RSR but only works with SmartPAC1 and/or SmartPAC2.



One major change in all three above, compared to RSR, is that ALL existing tools and initialization data are backed up or restored together in a single command. You don’t have to (and cannot) select individual tool for either backup or restore.



Alternative to Fork Trucks

If you have light fork truck needs in your facility and you cannot justify the upfront cost and operating expense of a typical fork truck, Production Resources may have a solution to your problem, Southworth's NEW STACKER LINE brings you all the benefits of a fork lift without any of the hassles!

Southworth's stackers are like having a fork lift, but at a fraction

of the cost. They are much easier to integrate into your operation because, unlike fork lifts that require certified operators, any trained employee can use them.



Call Production Resources for pricing and delivery. What more can you ask for:

- Quality Product.
- Competitive Price.
- Ready to Ship and the Southworth 2-Year Guarantee!

Southworth Stackers come in straddle or Fork-Over Models. We stock stackers with manual drive and electric lift in both models. Capacities range from 2200 lbs. to 3000 lbs. Raised height from 52.5" to 98".

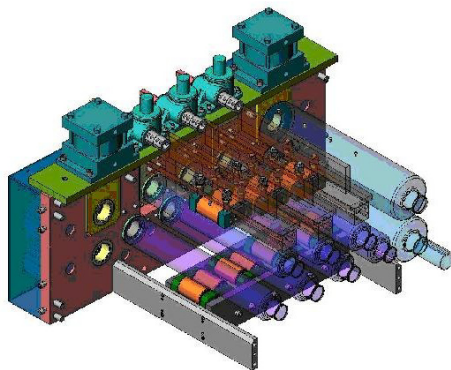


Coe Press Equipment (continued)

80-100 FPM, resulting in the potential of 100% linespeed gains.

Beef Up Straightener Capacity

The increased use of higher strength materials in the stamping



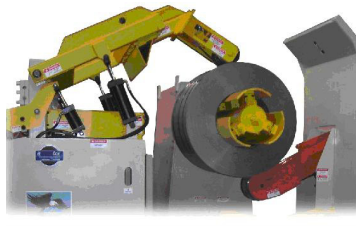
industry has created problems for many stampers.

Original equipment may have been specified to straighten only mild steels with lower yield strengths. Today, it's common for the yield strength ratings to exceed 50,000 PSI.

Straighteners can be upgraded to meet this demand with higher HP drives and motors, improved reduction packages, and the addition of center back-up assemblies to prevent deflection of the straightening rolls.

Contain the Coil Better

Along with higher strength materials, many stampers are being challenged to process a wider range of material thicknesses through their existing equipment. This presents challenges for the uncoiling equipment



in the system. Beyond providing the basic unwinding function, this equipment must also be capable of containing the energy stored in the coil after the banding is cut and performing threading and rewinding functions.

Existing equipment can benefit with upgrades to the threading drive system, as well as the addition of hold-down arms, lower hold-up arms, and motorized endwheels to assist in the containment and threading functions.

Upgrade to Hands-Free Threading

Effective changeover is essential to productivity in the pressroom. Many coil feed systems were

originally specified with little or no coil threading system features.

It's no longer efficient or safe to allow operators to manually thread heavy-gauge and high-strength coil strip into a straightener or feeder.



Existing coil feed lines can be upgraded with thread tables, peeler tables, debenders, and hands-free peeler-threader-holddowns to improve the efficiency and safety of the coil change process.

Add Motorized Line Functions

Set up speed and consistency can be enhanced by motorizing key functions of the coil feed line. Due to budget limitations, many coil lines were originally specified with manual set-up functions.

(Continued on Page 4)

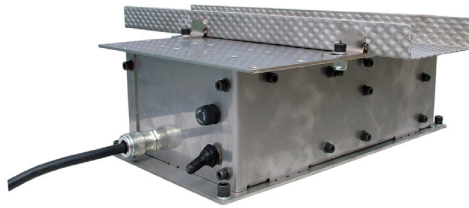
Announcing Magnetic Products' Mini Electric Shaker

MPI introduces the newest addition to its M-Series line of electric shaker conveyor motors, the "Mini Motor," an affordable *beltless* conveying concept for slug and scrap removal.

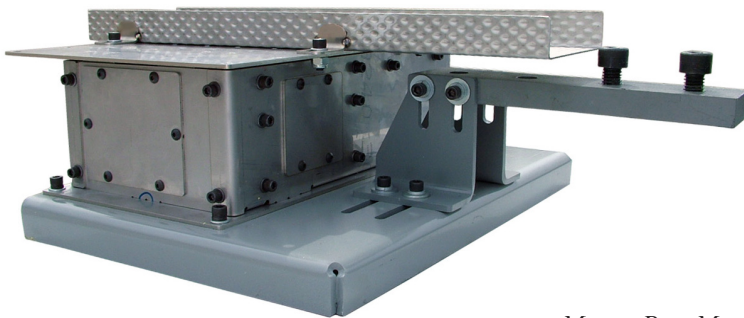
- Low profile trays fit between parallels
- Low maintenance—no belt replacement
- No air required—no seals or o-rings to replace
- Higher capacity models available
- Inexpensive operation

Specifications:

- Size: 4" H x 13" W x 8 3/8" W.
- Power: 115 VAC, Single Phase
- Weight: 28 lbs.
- Pan Weight Maximum: 10 lbs.
- Maximum Convey Weight: 60 lbs.
- Unit includes Mini Motor and Press Mounting Bracket (latter weighs an additional 6 lbs.)
- Optional Shaker Pan is available.



Motor Pan



Motor Pan Mount

PRI Application Engineers

Terry Bolser—Southern Ohio, Northwest Ohio, Central Kentucky

Steve Connolly—Northern Ohio

Phil Haskins—West Tennessee, Southern Kentucky, Mississippi

Chris Jones—Central and East Tennessee, Georgia, Alabama

Chris McKinnell—Mid-Atlantic States

Visit our website:

www.production-resources.com

Coe Press Equipment (continued)

Machine axis' such as passline height setting, edge guide adjustments, and straightener



roll depth settings can be effectively upgraded to motorized mechanisms. These motorized systems can be provided with upgraded digital position readouts to provide the operator with an even higher level of changeover and set-up efficiency.

FYI

Additional technical information is available at no charge on our website: www.production-resources.com. Just click on "OSHA/Safety" or "Tech Information."

Production Resources has Application Engineers available to help you at your facility. We can be reached at:

Phone: **800/863.3164**

Fax: **615/371.3282**

Email: **lcp@pri-mailbox.com**.

Published at our Main Office:
Production Resources Incorporated
118 Seaboard Lane, #106
Franklin, TN 37067-2819

Phone: 615/371.3888

Toll-Free: 800/863.3164

Fax: 615/371.3282