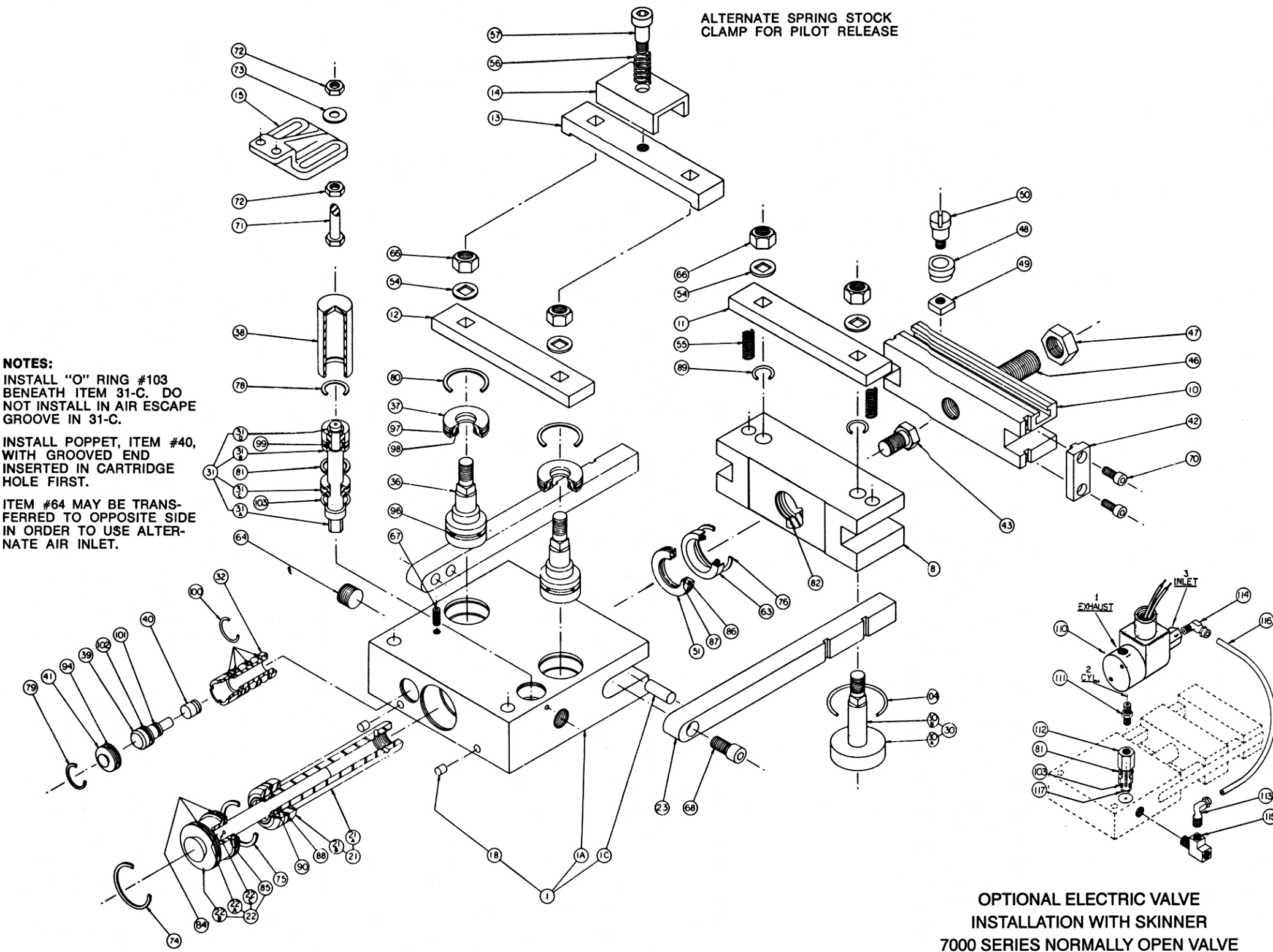


SERIES A & B



NOTES:
INSTALL "O" RING #103
BENEATH ITEM 31-C. DO
NOT INSTALL IN AIR ESCAPE
GROOVE IN 31-C.
INSTALL POPPET, ITEM #40,
WITH GROOVED END
INSERTED IN CARTRIDGE
HOLE FIRST.
ITEM #64 MAY BE TRANS-
FERRED TO OPPOSITE SIDE
IN ORDER TO USE ALTER-
NATE AIR INLET.

ALTERNATE SPRING STOCK
CLAMP FOR PILOT RELEASE

OPTIONAL ELECTRIC VALVE
INSTALLATION WITH SKINNER
7000 SERIES NORMALLY OPEN VALVE

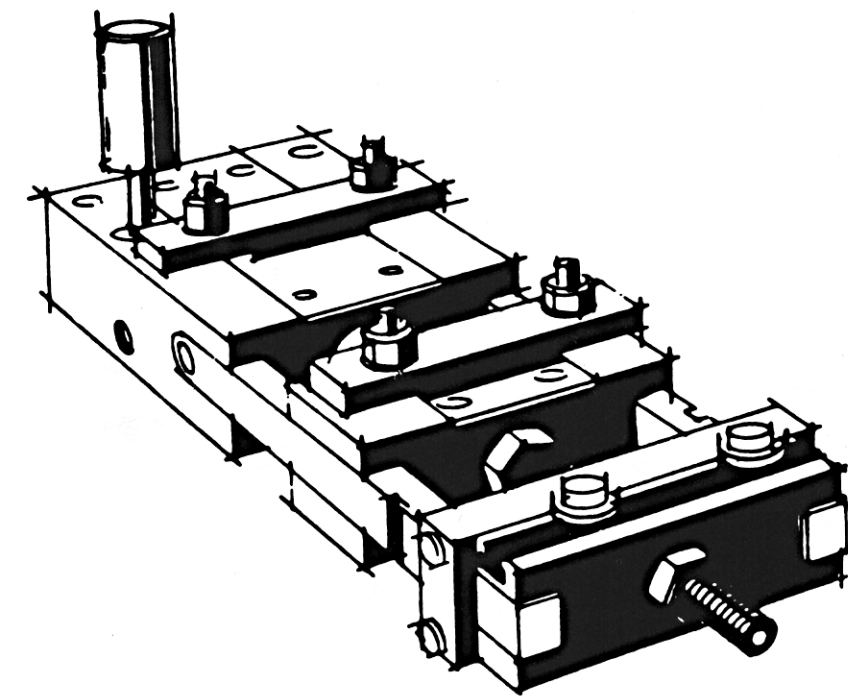
X — DENOTES PARTS INCLUDED IN
REPAIR KIT

ITEM	DESCRIPTION	QTY.	A SERIES PART NO.	B SERIES PART NO.
1	MAIN BODY ASSEMBLY	1	*	*
8	SLIDE BLOCK	1	30700051	30700052
10	STOP BLOCK	1	30700072	30700073
11	FEED CLAMP	1	31900059	31900060
12	STOCK CLAMP	1	31900083	31900084
13	SPEC. STOCK CLAMP BODY	1	31900107	31900108
14	SPEC. STOCK CLAMP HOLDER	1	31900126	31900126
15	PUNCH HOLDER BRACKET	1	31900055	31900055
21	MAIN PISTON ASS'Y.	1	*	*
22	CONTROL TUBE ASS'Y.	1	*	*
23	GUIDE RAIL	2	*	*
30	FEED CLAMP PISTON ASSEMBLY	2	25600000	25600000
31	ACTUATING VALVE ASS'Y.	1	25000000	25000000
32	CARTRIDGE	1	33900083	33900083
36	STOCK CLAMP PISTON	2	35500097	35500097
37	STOCK CLAMP PISTON RETAINER	2	35800012	35800012
38	ACTUATING VALVE CAP	1	35900004	35900004
39	PILOT OPERATED VALVE	1	35500137	35500137
40	POPPET	1	35100007	35100007
41	RET. PILOT OPERATED VALVE	1	35800016	35800016
42	STOP BLOCK CLAMP	2	31900131	31900131
43	MAIN CUSHION BOLT	1	36100006	36100006
46	ADJUSTING SCREW	1	66700005	66700005
47	ADJUSTING SCREW LOCKNUT	1	65104320	65104320
48	ROLLER	2	34200005	34200005
49	STOCK GUIDE NUT	2	36200005	36200005
50	STOCK GUIDE SCREW	2	35900007	35900007
51	MAIN PISTON RETAINER	1	35800020	35800020
54	CLAMP WASHER	4	34700003	34700003
55	SPRING	2	37500008	37500008
56	SPRING	1	37500012	37500012
57	SHOULDER SCREW	1	36100014	36100014
63	WIPER SEAL	1	60200017	60200017
64	PIPE PLUG	1	63130125	63130125
66	LOCKNUT, HEX HEAD	4	65202528	65202528
67	SPEED ADJUSTING SCREW	1	66700403	66700403
68	SOCKET HEAD CAP SCREW	2	65920037	65920037
70	SOCKET HEAD CAP SCREW	4	65908050	65908050
71	HEX HEAD CAP SCREW	1	65820150	65820150
72	HEX NUT	2	65102520	65102520
73	WASHER	1	61200015	61200015
74	SNAP RING	1	60900087	60900087
75	SNAP RING	1	60900087	60900087
76	SNAP RING	1	60900100	60900100
78	SNAP RING	1	60900056	60900056
79	SNAP RING	1	60900056	60900056
80	SNAP RING	2	60900087	60900087
81	SNAP RING	1	60900062	60900062
82	"O" RING	1	60108016	60108016
84	"O" RING	2	60108018	60108018
85	"O" RING	1	60108010	60108010
86	"O" RING	1	60108020	60108020
87	"O" RING	1	60118114	60118114
88	"O" RING	1	60108115	60108115
89	"O" RING	2	60108012	60108012
90	"O" RING	1	60108010	60108010
94	"O" RING	1	60108013	60108013
96	"O" RING	2	60108113	60108113
97	"O" RING	2	60108018	60108018
98	"O" RING	2	60108012	60108012
99	"O" RING	1	60118110	60118110
100	"O" RING	4	60120002	60120002
101	"O" RING	1	60120001	60120001
102	"O" RING	1	60108011	60108011
103	"O" RING	1	60108111	60108111
104	"O" RING	2	60108022	60108022
110	SOLENOID VALVE	1	69200000	69200000
111	HEX NIPPLE	1	67100010	67100010
112	CONTROL VALVE PLUG	1	34600005	34600005
113	ELBOW	1	67100004	67100004
114	ELBOW	1	67100004	67100004
115	STREET TEE	1	67100011	67100011
116	TUBING	1	34400083	34400083
117	"O" RING	1	60108010	60108010
"O" RING KIT			10900001	10900001
REPAIR KIT			10900124	10900124
* SPECIFY SERIAL NUMBER OF FEED WHEN ORDERING REPAIR PARTS.				
ITEM	1	21	22	23
MODEL	MAIN BODY	MAIN PISTON	CONTROL TUBE	GUIDE RAIL
A2	20200101	25500000	24400000	33600054
A4	20200102	25500001	24400001	33600055
A6	20200103	25500002	24400002	33600056
A8	20200104	25500003	24400003	33600057
B2	20200107	25500000	24400000	33600054
B4	20200108	25500001	24400001	33600055



RAPID-AIR CORPORATION

CORPORATE & SALES OFFICES 4601 Kishwaukee St., Rockford, Illinois 61109 (815) 397-2578 TWX 910-631-3423
MANUFACTURING DIVISION 821 First St., S.W., Madison, South Dakota 57042 (605) 256-6576

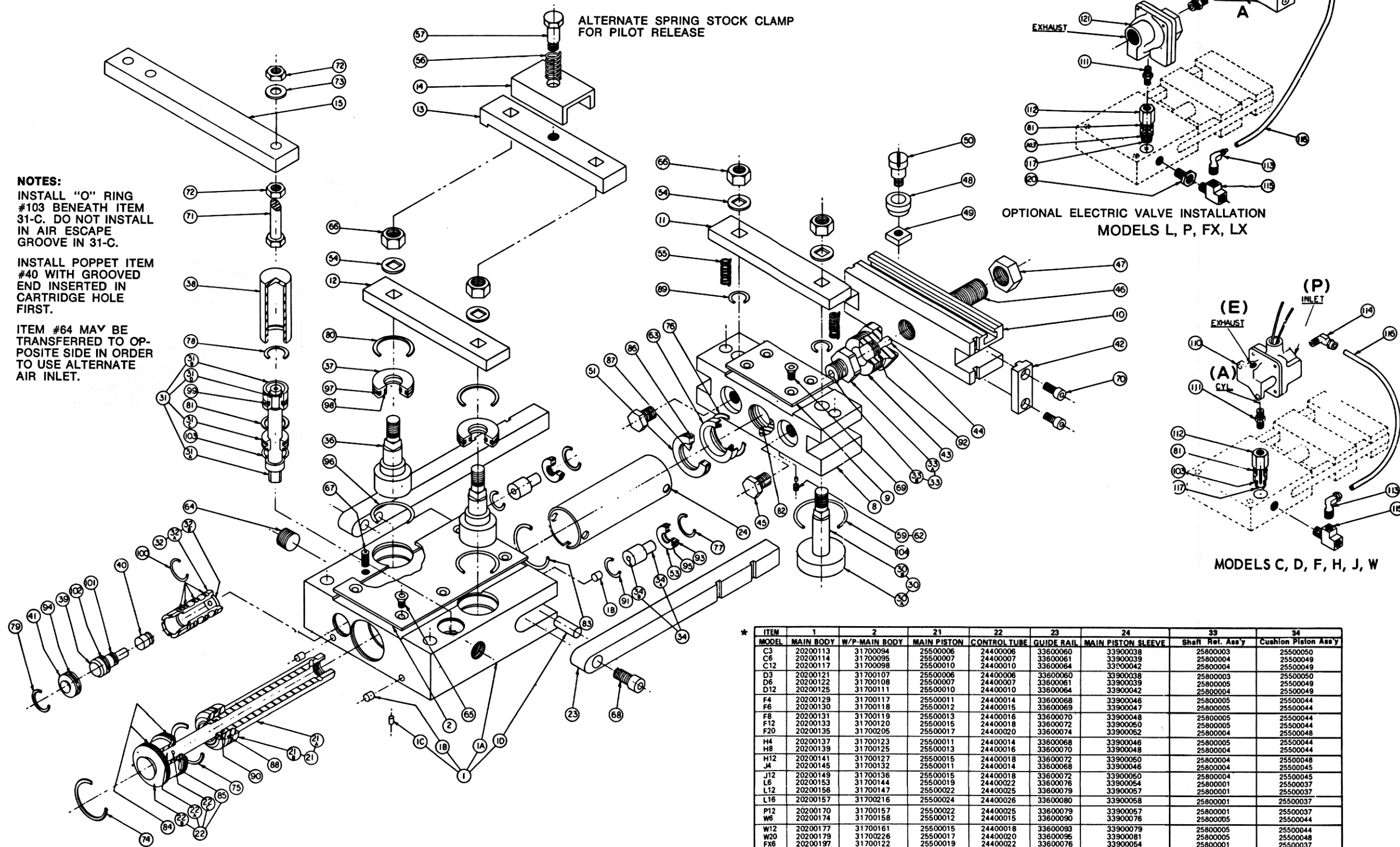


PUNCH PRESS FEEDS
TYPE 2 MODELS

Precision Press Room Equipment

parts
list
no.106
REVISED 3/1/79

SERIES C, D, F, H, J, W, L, P, FX, LX

[illegible]